

MANOR --- FARMHOUSE



To Let - Fully Furnished
£6,000 pcm
Available Spring 2025
www.manor-farmhouse.co.uk

#OverburyLife



MANOR FARMHOUSE

Manor Farmhouse, a beautifully designed home, offers a seamless blend of luxury and simplicity.



This property has been successfully operated as a Five Star and Gold Award self-catering holiday home, but is now available furnished, on a standard residential lease for a minimum of 12 months. Set in the beautiful Cotswold countryside and within easy reach of Cheltenham, Broadway, and the Welsh Marches, this exceptional home is perfectly suited for those seeking a refined country house.

Designed by Rossana Bossom Ltd, the interiors are both sophisticated and welcoming, with easy entertaining space that is stylish and practical. There are eight large bedrooms all with their own bathrooms, three reception rooms and an incredibly useful boot room as well as store and service rooms.

5 miles from junction 9 of the M5, with Birmingham and Bristol less than an hour away, Manor Farmhouse provides both seclusion and connectivity in equal measure.

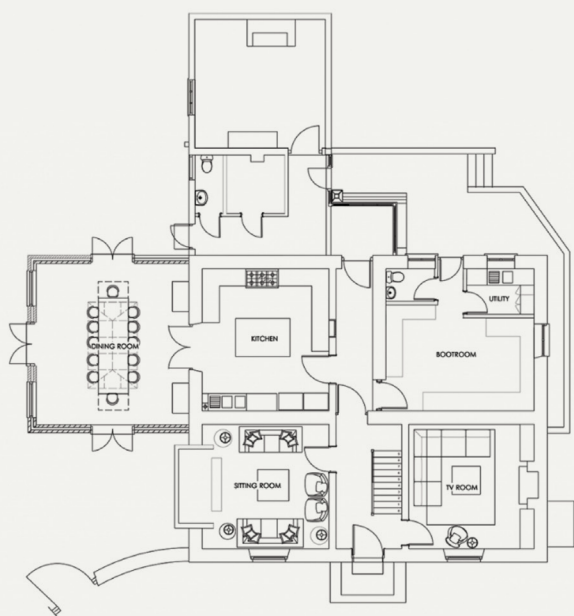


MANOR FARMHOUSE

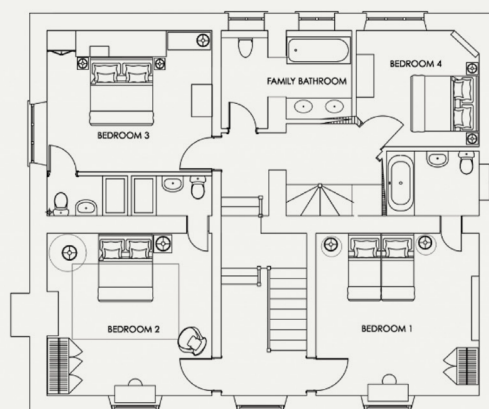
There is fibre broadband to the property, distributed by WiFi and Cat 5 points in every room making working from home easy. As the property has everything you need, you can just walk straight in and start enjoying it. From luxury linens to drinks fridges and more, Manor Farmhouse has it all. For ease we can provide gardening and other services by arrangement, so it really couldn't be simpler to arrive, enjoy and then lock up and leave. For those looking for an exquisite long-term residence or country bolt hole, Manor Farmhouse offers a rare opportunity to embrace countryside living without compromise.

FLOORPLANS

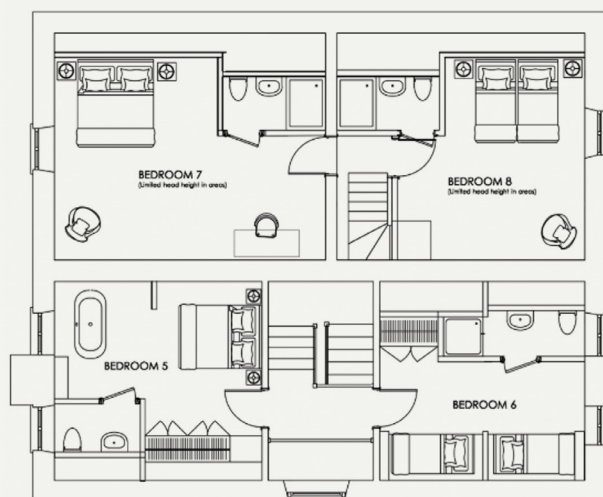
GROUND FLOOR



FIRST FLOOR



SECOND FLOOR



DETAILS

EPC D

COUNCIL TAX BAND: TBC

DEPOSIT £6,923

HOLDING DEPOSIT £1,384

MANOR
FARMHOUSE

LOCAL AREA

Conderton and Overbury is situated within the Cotswold National Landscape on the border of Worcestershire and Gloucestershire.

On the southern slopes of Bredon Hill there is a small early years nursery, primary school, a village hall, a bowling club and a cricket club. The villages have community at heart which means you will be joining a positive, thriving and engaged rural village. The surrounding countryside provides miles of unspoilt walks right from the doorstep and to the north, the house is surrounded by a community orchard.

Broadway is 11 miles east and is a large village regarded by many as one of the Cotswolds' finest

examples of traditional street architecture. It has a wide range of shops for day-to-day requirements together with restaurants, The Regency Spa town of Cheltenham offers extensive shopping facilities and high street shops, restaurants and bars as well as a wide selection of excellent schools. As well as those in Cheltenham there are several other good schools locally including The Elms and Malvern College. Local train services to London Paddington run from Cheltenham Spa and Evesham. Ashchurch station has services to Birmingham and Bristol.



Viewing strictly by appointment.
Further details and photos on our website.

Telephone: 01386 725111

Email: manorfarmhouse@overburyenterprises.co.uk

Website: www.manor-farmhouse.co.uk